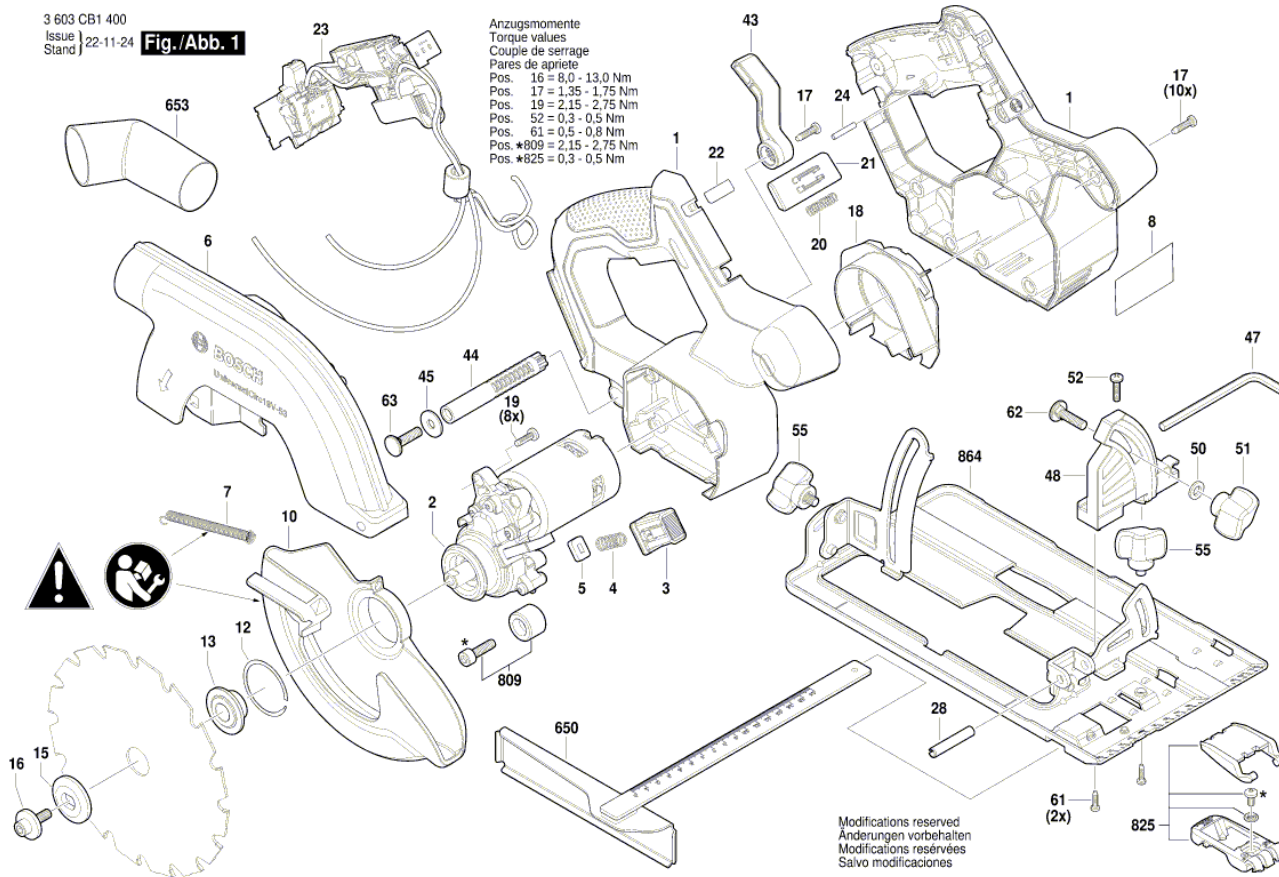


Illustration - Type - E



## Spare parts list

Item	Part Number	Description	Illustration
1	1 619 PB8 999	Housing Set	1
2	1 619 PB9 000	Motor-gearbox assembly	1
3	1 619 PB9 001	Cap	1
4	1 619 PB9 002	Compression Spring	1
5	1 619 PB9 003	Felt	1
6	1 619 PB9 004	Protective Guard	1
7	1 609 203 Y02	Extension Spring	1
8	1 619 PB9 005	Nameplate	1
10	1 619 PB9 006	Lower guard	1
12	1 619 PB9 007	Circlip	1
13	1 609 203 Y07	Clamping Flange	1
15	1 609 203 Y08	Conical Spring Washer	1
16	1 609 203 Y19	Screw	1
17	1 619 PB9 008	Tapping Screw	1
18	1 619 PB9 009	baffle plate	1
19	1 619 PB9 010	Thread-Forming Screw	1
20	1 619 PB9 011	Compression Spring	1
21	1 619 PB9 012	Switch Button	1
22	1 619 PB9 013	Sticker	1
23	2 607 202 569	Electronics Module	1
24	1 619 PB9 014	Locating pin	1
28	1 609 203 Y04	Spring Pin	1
43	1 619 PB9 018	Fixing Lever	1
44	1 619 PB9 019	Rod	1
45	1 609 203 Y40	Plain Washer	1
47	1 619 PB9 020	Offset Screwdriver	1
48	1 609 203 Y57	Angle Support	1
50	1 609 203 Y58	Plain Washer	1
51	1 609 203 Y59	Wing Nut	1
52	1 603 430 OCA	Screw	1
55	1 609 203 Y61	Wing Screw	1
61	1 609 203 Y62	Tapping Screw	1
62	1 609 203 Y77	Bolt	1
63	1 609 203 Y44	Bolt	1
650	1 609 203 X87	Edge Guide	1

**Spare parts list**

<b>Item</b>	<b>Part Number</b>	<b>Description</b>	<b>Illustration</b>
653	1 609 203 X86	Vacuum Adapter	1
809	1 604 220 5BD	Stopper	1
825	1 600 A02 RE6	Guide Piece	1
864	1 609 203 Y18	Base Plate	1